



CRÉAFIBRES

**Fibers, yarns and stainless steel
textile products**

363 rue de Gand - 59200 Tourcoing -  France

Tel : +33 3 20 76 60 90

Fax : +33 3 20 76 60 91

Email : contact@creafibres.fr

www.creafibres.fr



Our History



With a **40 years** professional experience in the textile industry with natural, synthetic and technical products, Michel DUJARDIN created **CREAFIBRES** en 1996.

At the head of the company since 2010, the Dujardin family keeps up the development.



363 rue de Gand - 59200 Tourcoing -  France
Website : www.creafibres.fr - Email : contact@creafibres.fr
Tel : +33 320 766 090 - Fax : +33 320 766 091

Our activity



- CREAMFIBRES uses **technical fibres**, especially **stainless steel fibres**, and creates technical textile products



- CREAMFIBRES also uses other technical material such as **aramid, wool or polyester** for blends

- CREAMFIBRES makes **stretch broken slivers, bulks, 100% stainless steel** or **blended spun yarns**, and **knitted fabrics**.


CREAFIBRES develops in partnership : **woven tapes, non-woven products, woven fabrics** and **braids**.

Our know-how



CREAFIBRES' success is based on :

- A **careful listening** of our customers needs.
- An **ability to develop special requests** thanks to our research & development and the control of our process.
- The **quality** thanks to **monitoring indicators** and **quality controls** during each step all along the process.
- A **commitment to quality** through a certificate issue.



QUALITY CONTROL

Packing List number:
Date of Packing List:
Order:
Batch number:

Technical data								
Required	Controlled							
Stainless Steel spun yarn, AISI 316L, 12µ	-							
metric 11/2 Nm eq 5,5	5.51							
twist: 235 T/m Z / 135 T/m S	245 T/m Z							
Yarn with spliced, no knots								
tensile strength (average): > 1500cN	21							
tensile strength (min): cN	11							
tensile strength (max): cN	21							
elongation 0.5 – 1.0%	0.6							
CV-Value: < 8	0							
Oil : 0.4%								
free from wax and silicon								
Alloy composition:								
C	Si	Mn	Ni	Cr	Mo	S	P	F
0.030	0.75	2.00	10.00	16.00	2.00	0.030	0.045	
			14.00	18.00	3.00			
0.026	0.54	0.79	10.94	16.54	2.05	0.001	0.028	

Signed of behalf of CREAMFIBRES
Matthieu DUJARDIN

CREAFIBRES S.A.S.
303 rue de Gand
89200 TOURCOING
Tél : +33 (0) 3 20 76 60 90
Fax : +33 (0) 3 20 76 60 91
Site : 400 813 884 0020
TVA FR 10 400 813 884

363 rue de Gand - 59200 Tourcoing - France - Tél : +33 (0) 320 76 60 90 - Fax : +33 (0) 320 76 60 91
www.creafibres.fr - contact@creafibres.fr
RC : 409 513 494 60029 - APE 172 J - TVA : FR10 409 513 494
Banque Scabert Dupont - 33 avenue Jean Lebas - F - 59100 Roubaix - IBAN FR76 3002 7175 2800 0
Paris Banque - 2 rue du Général Leclerc - F - 59200 Tourcoing - IBAN FR76 3048 8001 1600 4200

RAPPORT DE CONTROLE QUALITE SUR PRODUCTION Document: EDR
Version: A

Partie :	Produit à réaliser :	tubon	bourre
COUPE :			
A faire		5 MESURES AU DEMARRAGE	
CONTRÔLE 1		mesure en mm :	
échantillon à scotcher			
CONTRÔLE 2		mesure en mm :	
échantillon à scotcher			
CONTRÔLE 3		mesure en mm :	
échantillon à scotcher			
CONTRÔLE 4		mesure en mm :	
échantillon à scotcher			
CONTRÔLE 5		mesure en mm :	
échantillon à scotcher			
MOYENNE			
TOLEBRANCE :			
coupe 40 mm : min 34 mm - maxi 46 mm			
coupe 60 mm : min 51 mm - maxi 69 mm			
coupe 80 mm : min 68 mm - maxi 92 mm			
coupe 100 mm : min 85 mm - maxi 115 mm			
		CONFORME	NON CONFORME
OBSERVATIONS :			

○ 363 rue de Gand - 59200 Tourcoing - France
Website : www.creafibres.fr - Email : contact@creafibres.fr
Tel : +33 320 766 090 - Fax : +33 320 766 091

Fields of applications



CREAFIBRES' products are mainly used in the sectors of :



Glasswork

○ **Glass industry.**



Transport

○ **Transportation and automotive industries.**



Protection

○ **Protective and safety clothing (thermal and mechanical).**



Filtration

○ **Filtration.**




Electromagnetic

○ **Electromagnetic shielding.**



Building

○ **Construction, thermal insulation and soundproofing.**

○ 363 rue de Gand - 59200 Tourcoing -  France
○ Website : www.creafibres.fr - Email : contact@creafibres.fr ○
Tel : +33 320 766 090 - Fax : +33 320 766 091

Our catalogue

Stretch-broken slivers

- Slivers **100% stainless steel** - 8, 12 et 22 μ
- Slivers **stainless steel / aramid**
- Slivers **stainless steel / wool**
- Slivers **stainless steel / polyester**



Our catalogue



Bulks

○ Bulks **100% stainless steel**

- 8 μ - cut from 40 to 150 mm
- 12 μ - cut from 40 to 150 mm
- 22 μ - cut of 80 mm



○ Bulks **stainless steel / wool (18%-82%)** cut of 110 mm

○ Bulks **stainless steel / polyester (52%-48%)** cut of 60 mm



Our catalogue



Spun Yarns

- Spun yarns **100% S.S.** 8 μ - 12 μ - 22 μ
- Spun yarns **Fecralloy** 17 μ - 22 μ
- Spun yarns **S.S. / aramid** (60%-40%)
- Spun yarns **S.S. / wool** (20%-80%)
- Spun yarns **S.S. / polyester** (50%-50%)



Nm 5 (200Tex) à Nm 20 (50Tex).



Our catalogue

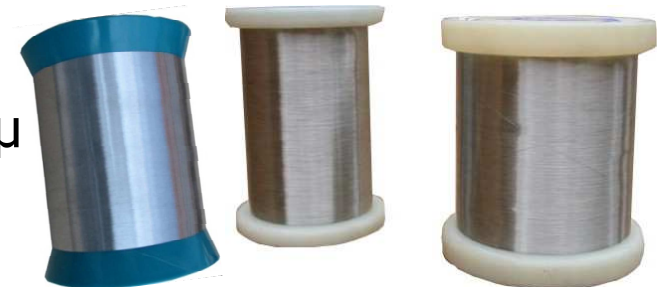


Continuous yarns

○ **Continuous twisted** yarns – 12 μ



○ **Continuous monofilament** yarns – 35 μ , 50 μ



Our catalogue




Knitted fabrics

○ Knitted fabrics **100% stainless steel**

○ ±950 g/m² ; 1600 mm opened ; 10 mL

○ ±850 g/m² ; 2000 mm opened ; 10 mL



○ 363 rue de Gand - 59200 Tourcoing -  France ○
Website : www.creafibres.fr - Email : contact@creafibres.fr
Tel : +33 320 766 090 - Fax : +33 320 766 091

Our catalogue

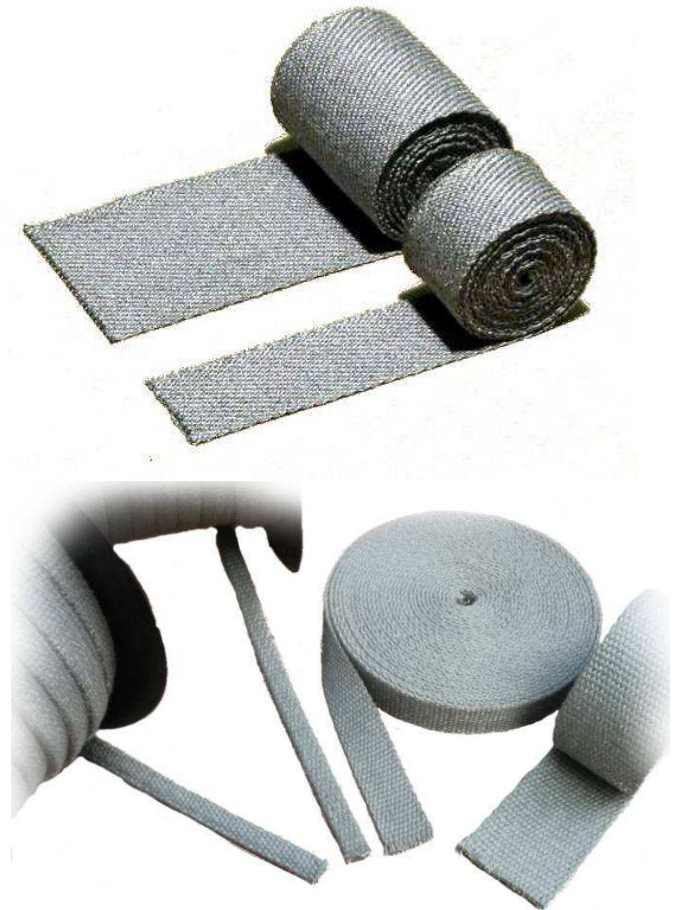


Woven tapes

CREAFIBRES handles a range of products :

- Woven tapes **100% stainless steel**
Width 10 / 25 / 40 / 50 / 85 mm

- Woven tapes **stainless steel / aramid**
Width 12 / 14 / 15 / 16 / 25 / 50 mm



Our catalogue

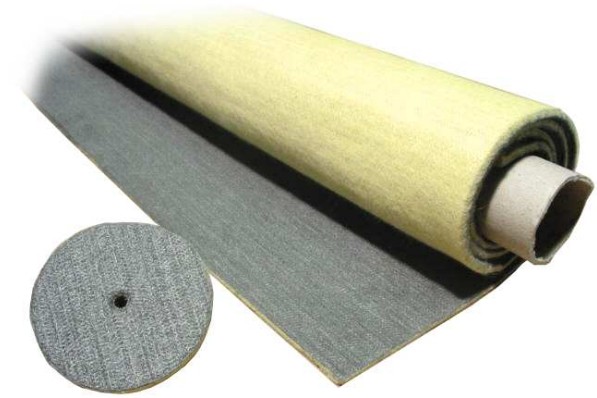



Non-woven fabrics

○ Non-woven fabrics **100% stainless steel**



○ Non-woven fabrics **stainless steel / aramid**



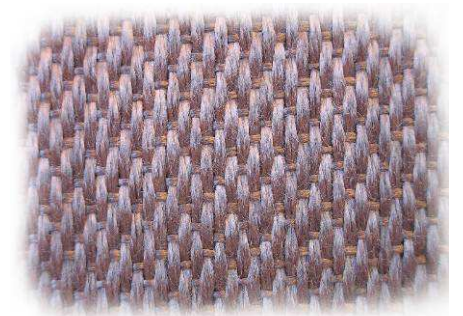
○ 363 rue de Gand - 59200 Tourcoing -  France
○ Website : www.creafibres.fr - Email : contact@creafibres.fr ○
Tel : +33 320 766 090 - Fax : +33 320 766 091


Our catalogue

Woven fabrics

Woven fabrics **100% stainless steel**

- 570 gr/m²
- 650 gr/m²
- 740 gr/m²
- 1200 gr/m²



○ 363 rue de Gand - 59200 Tourcoing -  France ○
Website : www.creafibres.fr - Email : contact@creafibres.fr
Tel : +33 320 766 090 - Fax : +33 320 766 091

Our catalogue



Braids

- Circular braids **100% stainless steel**

- Full


- Empty

- Circular braids **stainless steel / aramid**

- Full

- Empty



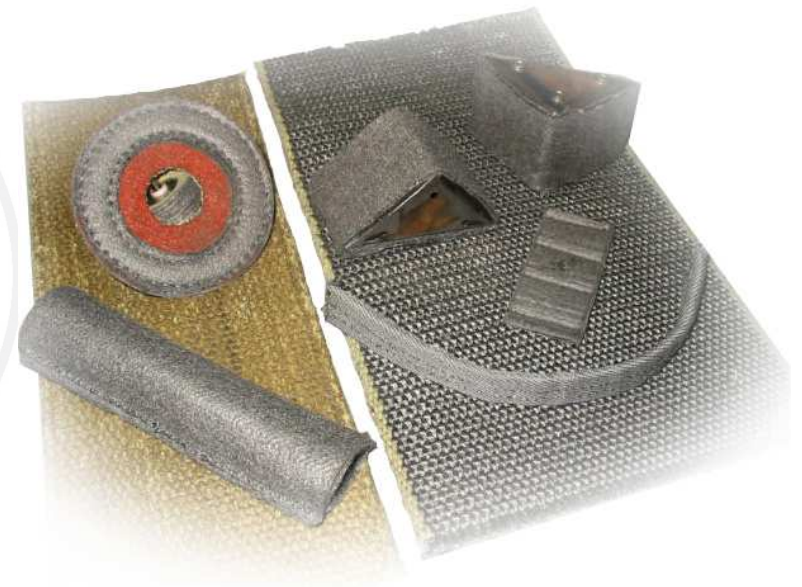
○ 363 rue de Gand - 59200 Tourcoing -  France ○
Website : www.creafibres.fr - Email : contact@creafibres.fr
Tel : +33 320 766 090 - Fax : +33 320 766 091

New materials



CREAFIBRES wishes to develop **new products** with other **materials** :

- **Aluminium**
- **Silver**
- **Carbon**
- **Copper**
- **Glass fibre**
- **.....**



Your contact



Mr Arnaud DUJARDIN

C.E.O.

arnaud.dujardin@creafibres.fr

Mr Régis BOULANGER

Technical-sales engineer


regis.boulangier@creafibres.fr

Mrs Valérie DESPINOIS

Commercial assistant

valerie.despinois@creafibres.fr



363 rue de Gand - 59200 Tourcoing -  France
Website : www.creafibres.fr - Email : contact@creafibres.fr
Tel : +33 320 766 090 - Fax : +33 320 766 091



CRÉAFIBRES

363 rue de Gand - 59200 Tourcoing -  France

Tel : + 33 3 20 76 60 90

Fax : + 33 3 20 76 60 91

Email : contact@creafibres.fr

www.creafibres.fr

